

Carefully read the following instruction before using the torch for the first time

For safety reasons, shipped without gas.

## Instructions for use

Please use only high-quality butane gas.  
(Zippo butane recommended)

- \* First make sure your device is turned off and make sure the safety button is in off position (image 2)
- \* Then remove the stand by pulling away from torch to secure access to filling the gas
- \* Turn the torch upside-down and feed the gas through the filling valve under the bottom of the fuel (image 1)
- \* Insert the gas cylinder nozzle down into the filling valve to start fueling, hold it about 10 seconds, and then wait 4-5 minutes before using.

## Ignition

**WARNING** : Do not aim towards the face or body

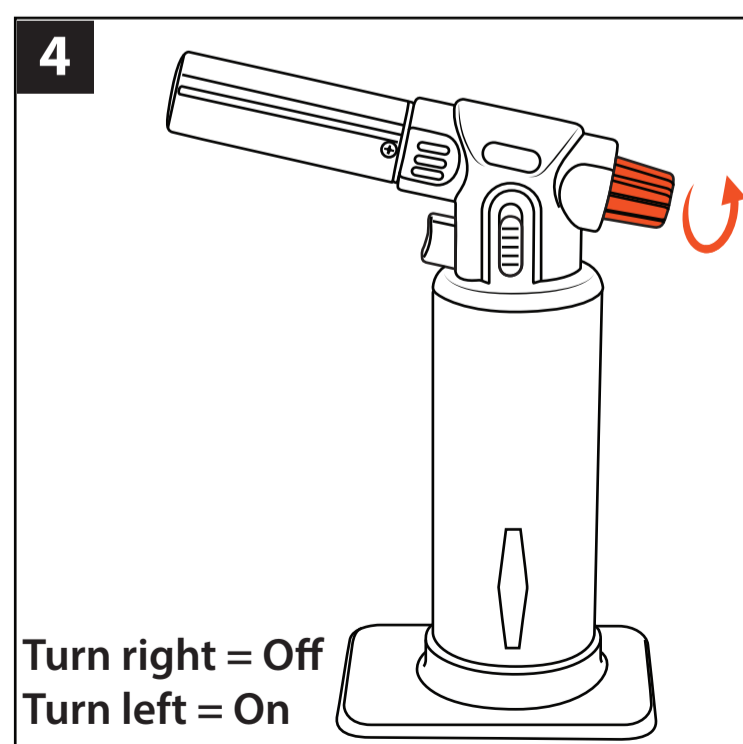
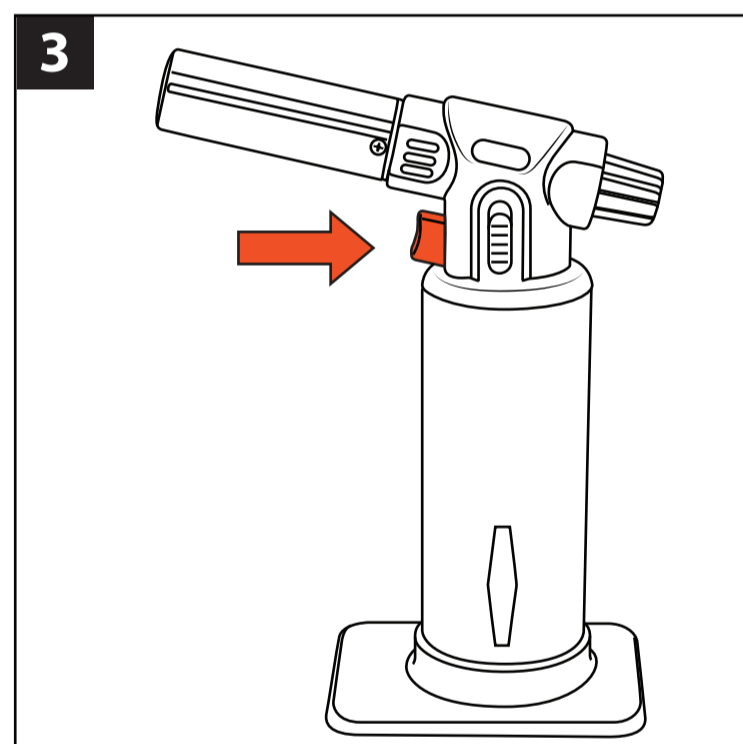
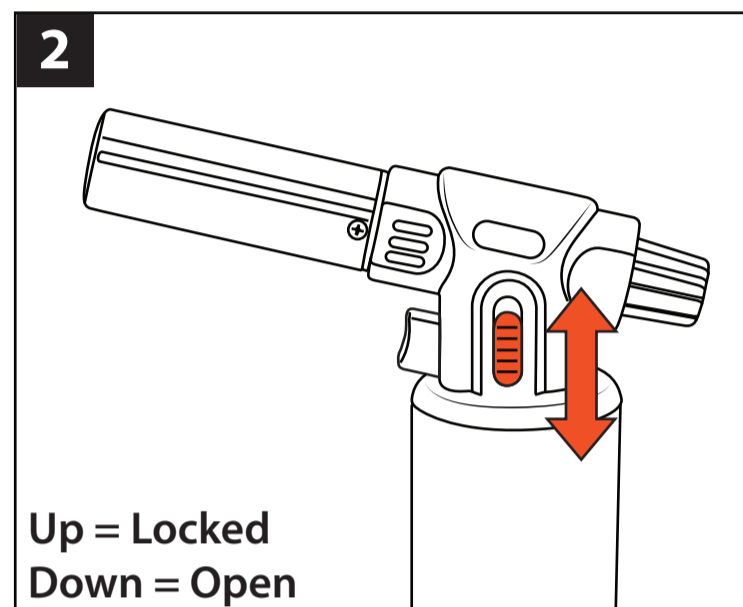
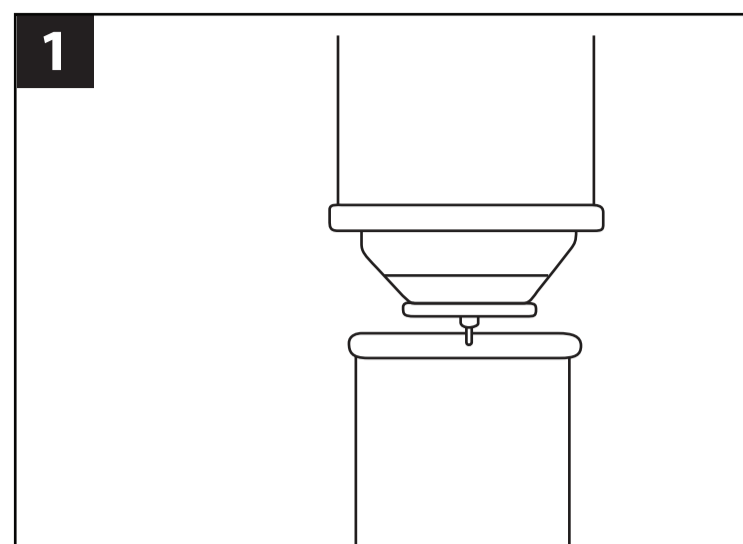
- Slide down the safety lock to on position ( image 2).
- Turn gas knob ( image 4) to the left until you hear gas flow.
- Press the ignition button ( image 3) and the flame will ignite instantly

## Flame adjustment

- To change the intensity of flame, use the knob button.
- To increase the flame size, turn the knob to the left.
- To lower the flame size, turn the knob to the right side.
- keep the flame far from the food at about 1 "to 1.5" (2.5-3.5 cm).
- Recommended: do not adjust the flame too long as it only waste the fuel and makes the flame unstable, for the best result adjust the flame adjustment knob (image 4) to the mid-range.

## Turning off

- To shut off the flame, turn the adjustable flame knob all the way to the right, the fuel supply is completely shut off.( Leave in this mode until next use)
- Push the safety lock to the off position the quick fire ignition is now disabled.



## To get your e-book

Please check your email we sent to you after purchase.

If you do not see the email, please send us an email and we will send you the e-book again.